



RISBY CREEK PROPERTY

STRATABOUND GOLD- YUKON TERRITORY

- New gold discovery - central Yukon
- Gold in float boulders to **4.88 g/t Au** along a 200 m long boulder train.
- Quartz - limonite - pyrite \pm arsenopyrite
- 1 trench exposure: 1.0 m thick stratabound horizon
- Road accessible off the Campbell Highway, 83 km east of Ross River

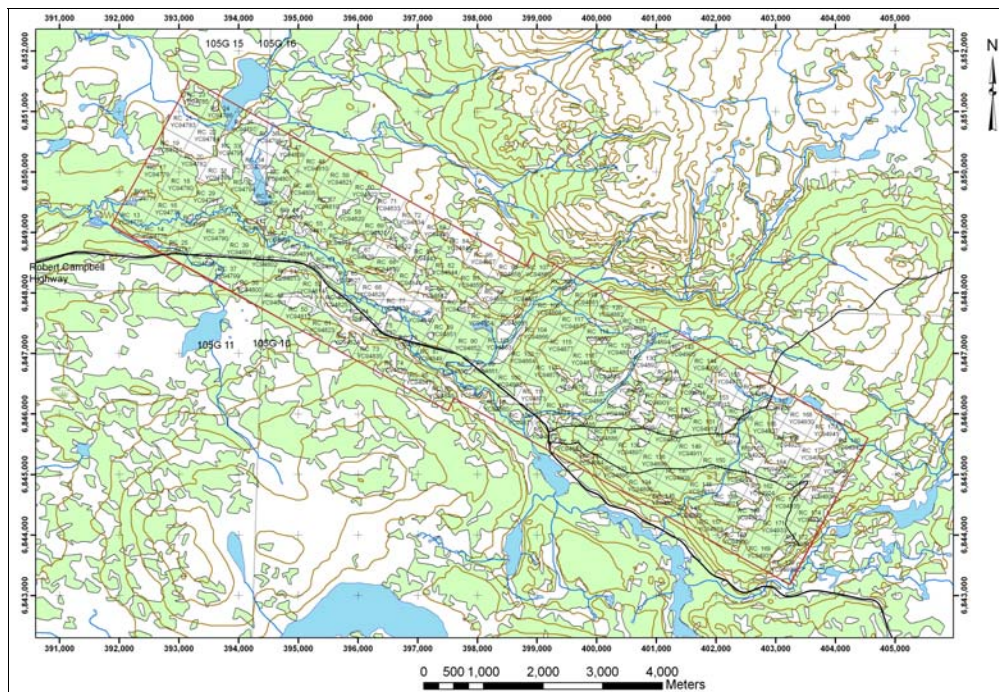
LOCATION & ACCESS

The Risby Creek Property is centred at 61° 43' N 130° 52' W on NTS 105 G 10 in the Watson Lake Mining District, Yukon Territory and consists of 168 Quartz claims (RC 13-180). The property is 83 km ESE of Ross River and is readily accessible from the Campbell Highway.

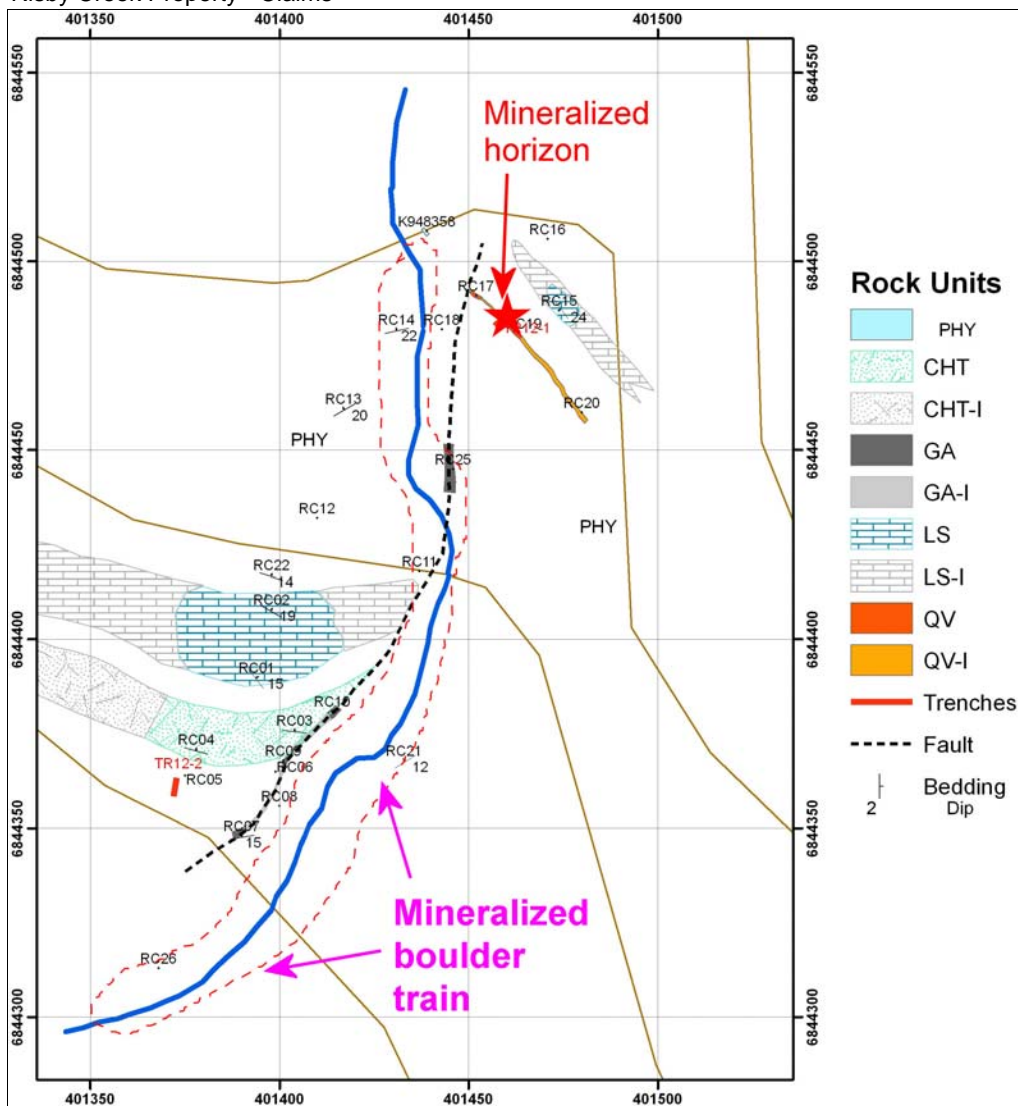
EXPLORATION HISTORY

Pete Risby discovered gold bearing quartz float in a small creek draining hills north of the Campbell Highway near Campbell Creek in May 2009. The property was staked in June 2009 and examined briefly during that year by Underworld Resources. The property was optioned by Panarc Resources Ltd. in May 2009 from the estate of Pete Risby.

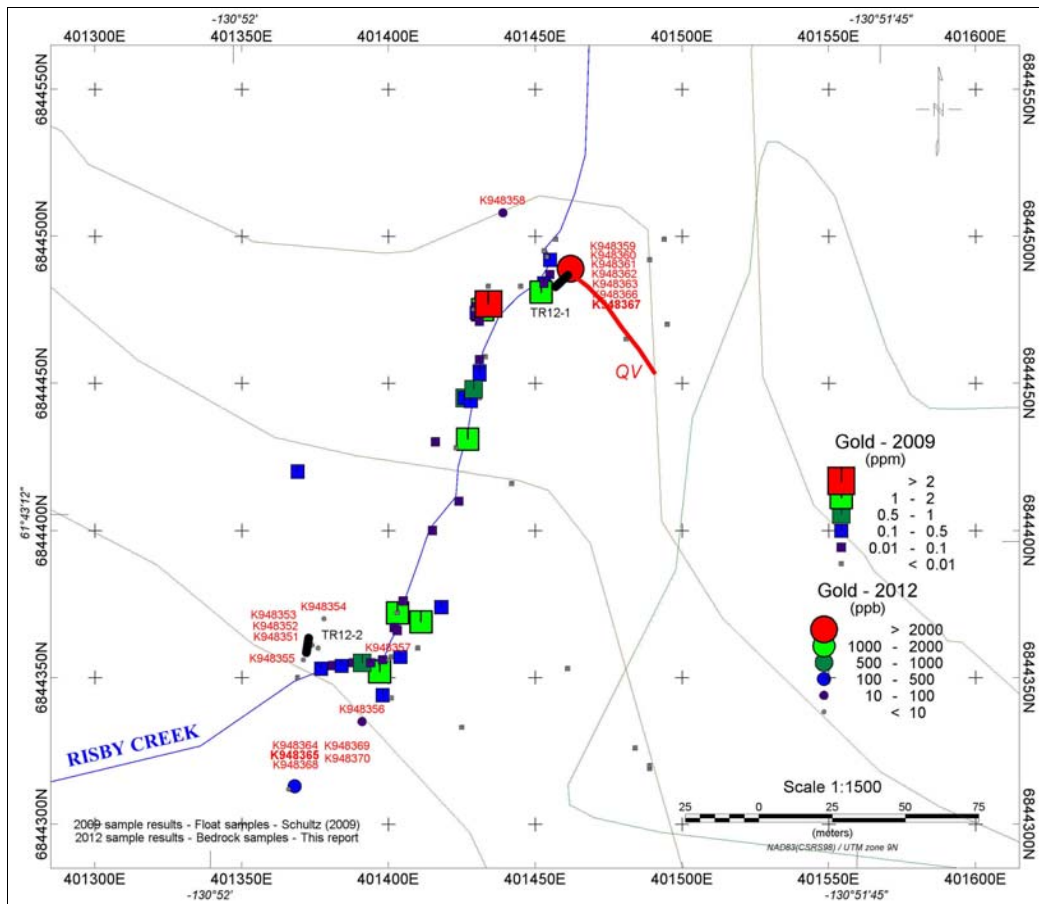




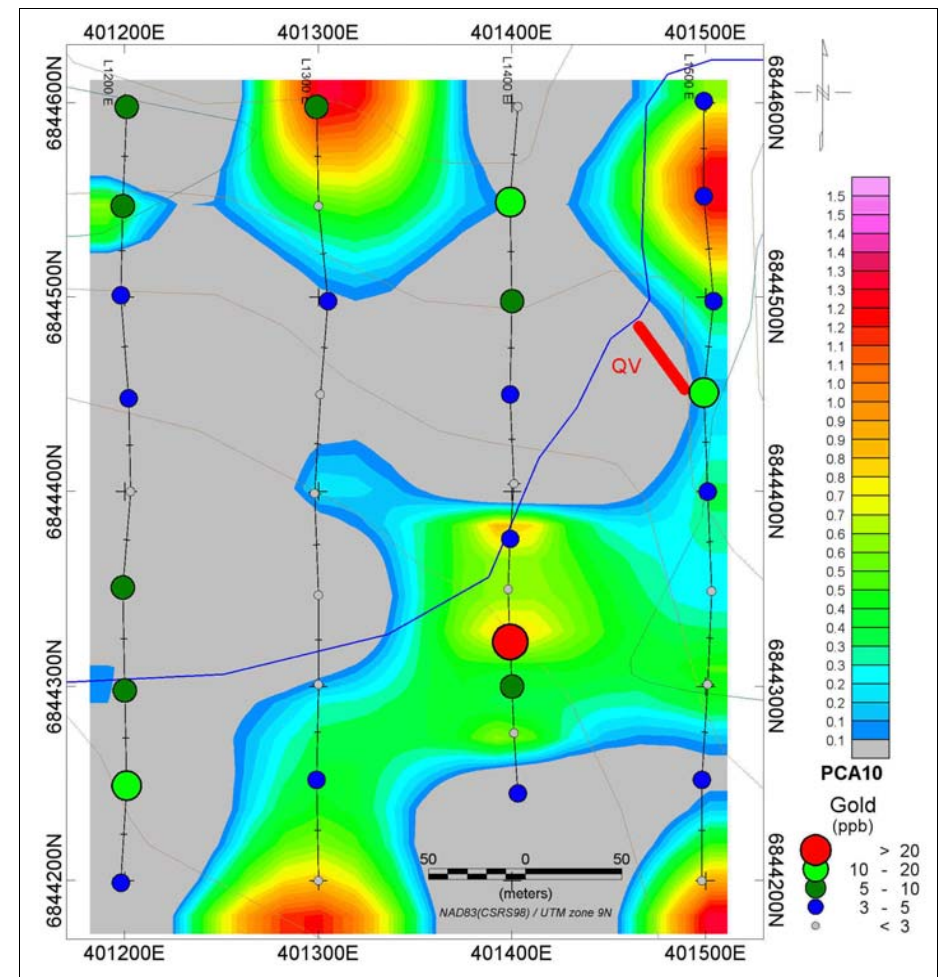
Risby Creek Property - Claims



Geology - Main Showing area



Gold in rock samples (2009 - float / 2012 - bedrock)



Gold in soils with PCA component associated with gold (PCA 10) (As, Ag, Ti, Na)

GEOLOGY & ECONOMIC MINERALIZATION

The property lies in a klippe between the Money Creek and Jules Creek Thrust Faults in the Yukon Tanana Terrane. It is underlain by phyllite, chert, limestone and quartzite of the Campbell Range Succession. Rocks strike generally east-west and dip north, parallel to a regional foliation. There is a north striking fault running along Risby Creek localized along a graphitic argillite horizon. Gold is found with quartz, pyrite, limonite and variable amounts of arsenopyrite in a 200 m long boulder train following Risby Creek. Float grab samples have returned up to **4.88 g/t Au** and 19 out of 115 samples collected to date run greater than 0.3 g/t Au. Similar material is exposed in a trench on the east side of Risby Creek. A 1.0 m thick, stratabound quartz-sulphide horizon ran 0.05 g/t Au over 1.0 m and returned grab samples to **0.87 g/t Au** from muck samples. It is likely that the mineralized float is coming from multiple horizons as there are thicker boulders with different mineralogy in the creek bed. Both massive and sucrosic quartz is present and there appears to be two populations in the gold results based on arsenopyrite content. There is a weak gold soil anomaly with associated arsenic and silver, best defined by Principal Component Analysis and running along the east side of Risby Creek. This may be associated with bedrock gold mineralization.



Mineralized float in Risby Creek



Mineralized horizon exposed in trench

PROPOSED EXPLORATION PROGRAM

Trenching and shallow (Packsack) diamond drilling are proposed to investigate the bedrock mineralization found during the 2012 trenching. Additional soil surveys are planned to in-fill and extend the soil grid east of Risby Creek in the area of favourable response.

THIS PROPERTY IS AVAILABLE FOR OPTION



Contact Mike Power at (907) 321-7672

www.panarc-resources.com